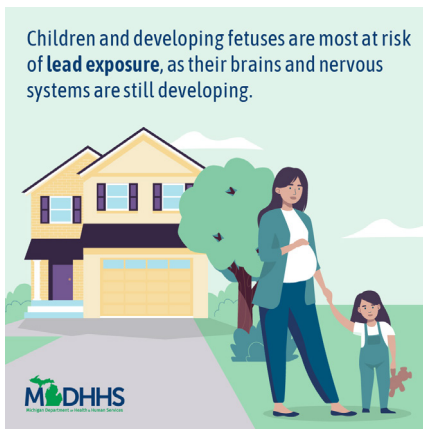


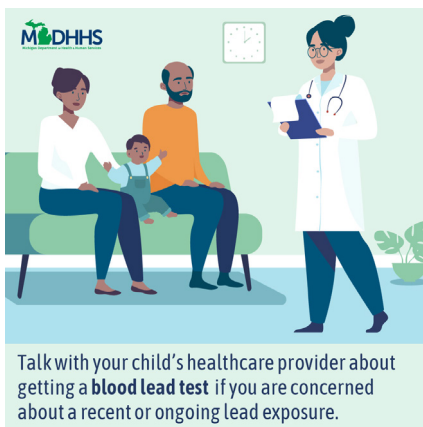
# Social Posts



Lead can be harmful to developing fetuses and children. Exposure can affect the development of the brain and the nervous system. Learn more about the effects of exposure at [Michigan.gov/MiLeadSafe](https://Michigan.gov/MiLeadSafe).



Lead-based paint (which can sometimes be found in homes built before 1978) is the #1 source of lead exposure in Michigan. Learn more about the sources of lead at [Michigan.gov/MiLeadSafe](https://Michigan.gov/MiLeadSafe).



A blood lead test can identify if you or your loved ones have a recent or ongoing exposure to lead. Ask an expert about getting tested. Learn more at [Michigan.gov/MiLeadSafe](https://Michigan.gov/MiLeadSafe).



Lead-contaminated soil can be tracked into the home and absorbed into the body. Do you know how to reduce the risk of exposure? Fight off lead, an invisible threat. Learn more at [Michigan.gov/MiLeadSafe](https://Michigan.gov/MiLeadSafe).



Live in a home built before 1978? Reduce the risk of lead exposure and have it inspected by a licensed lead inspector. Learn more about the sources of lead, visit [Michigan.gov/MiLeadSafe](https://Michigan.gov/MiLeadSafe).

## Ask about lead testing.



Lead is an invisible threat. One way to be sure if your child's been exposed: Ask your doctor about a blood lead test. Visit [www.Michigan.gov/MiLeadSafe](http://www.Michigan.gov/MiLeadSafe) to learn more about blood lead testing.

You  
can't  
see  
lead...



Kids can be exposed to invisible lead particles in many ways. Ask your child's doctor about a blood lead test. Visit [www.Michigan.gov/MiLeadSafe](http://www.Michigan.gov/MiLeadSafe) to learn more.



Lead exposure is especially dangerous for young children whose bodies and brains are still developing. Learn how to prevent it. Visit [www.Michigan.gov/MiLeadSafe](http://www.Michigan.gov/MiLeadSafe) to learn more about lead exposure.